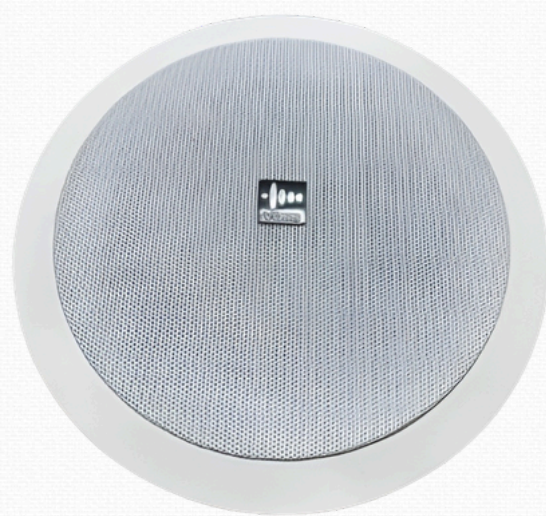




OUR PRODUCTS

VOSS AUDIO CEILING SPEAKER SM-05A-6



PRODUCT DESCRIPTION

- MODEL:SM-05A-6
- COAXIAL
- RATED POWER:5W/10W/15W
- SPEAKER UNIT SIZE:6.5"
- FREQUENCY RESPONSE:90HZ-20KHZ
- IMPEDANCE:70V-100V
- SENSITIVITY(1W/1M):90DB
- DIMENSION:Ø225*95MM
- MOUNTUNG DIAMETER:Ø195MM
- MATERIAL:ABS
- WEIGHT:1.4KG